

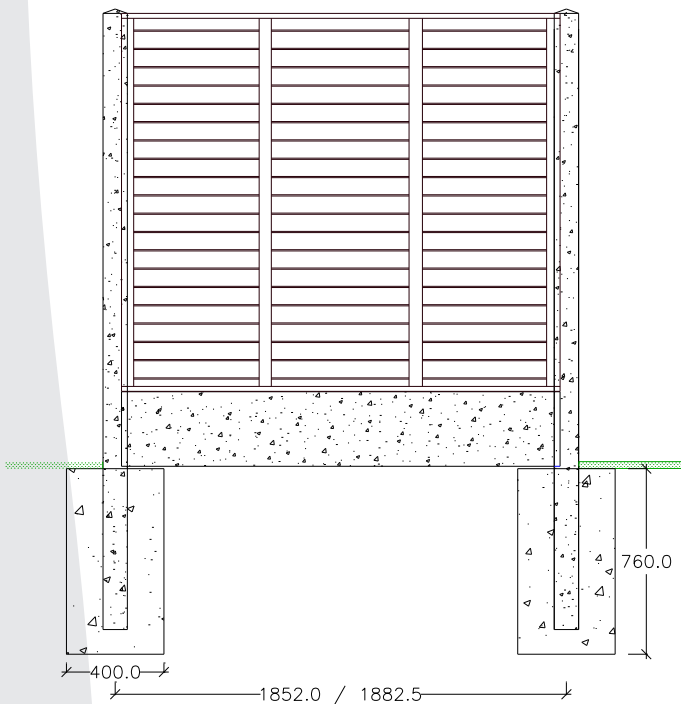
## POST & PANEL FENCING

Post and Panel fencing is the most effective solution where a dividing wall is needed between adjoining properties.

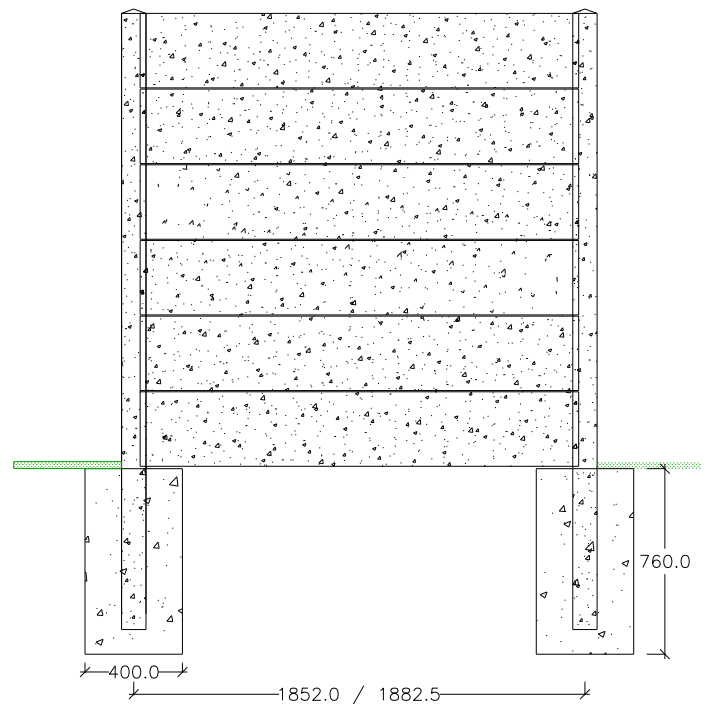
Manufactured to I.S. EN 12839:2012.  
Precast concrete products - Elements for fences.



### Timber Panel

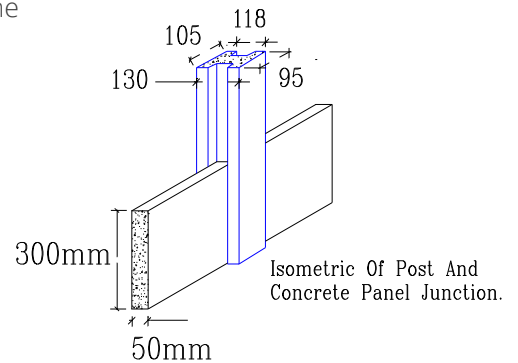


### Concrete Panel



Posts should be buried to a depth of 600 mm in a minimum 400 x 400 mm rectangular or 400 mm diameter auger hole, and backfilled using concrete to a prescribed mix type C15 as described in the "Irish Building Specification,"

- Easy to handle
- Simple and fast construction
- Low cost compared with traditional wall construction
- No Cranage
- High quality finishes
- Savings in construction time
- Minimal site labour



UK site



UK: Tel 0800 0393367 email [info@killeshalprecast.co.uk](mailto:info@killeshalprecast.co.uk) web [www.killeshalprecast.co.uk](http://www.killeshalprecast.co.uk)  
Rep. Irl: Tel 057 9353018 email [sales@killeshal.com](mailto:sales@killeshal.com) web [www.killeshal.com](http://www.killeshal.com)

Rol site

